

Legend

- Screening Location (2023; □400 mg/kg)
- Screening Location (2023)
- ▲ Screening Location (2022)
- ▭ East End Park
- ▭ Parcel Boundaries
- Approximate Location of Fencing
- 40 XRF Value (2022; mg/kg)
- 40 XRF Value (2023; mg/kg)

NOTE:
 1) Locations denoted with an asterisk (*) indicate screening locations where the planned sample location had to be offset due to access issues.

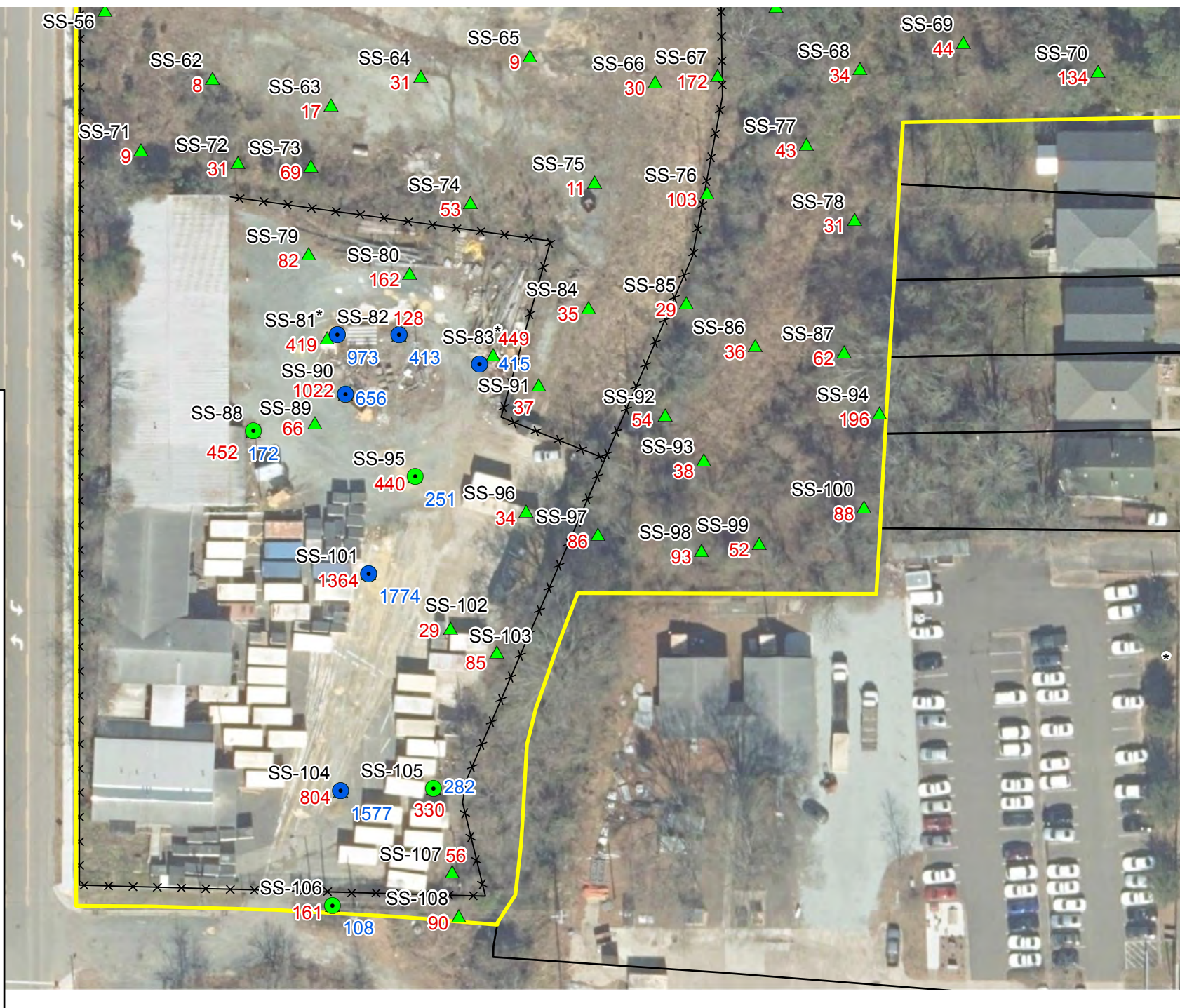
- REFERENCES:
1. AERIAL IMAGERY AND PARCEL BOUNDARIES FROM NC ONEMAP.
 2. Legacy Pb contamination in the soils of three Durham city parks: Do secondary forest organic horizons effectively blanket Pb in city park soils contaminated by historic waste incineration? Enikoe Bihari, December 16, 2022
 3. MID-ATLANTIC FIELD NOTES

1 inch □ 70 feet



SCREENING LOCATION MAP
 DURHAM PARK LEAD ASSESSMENT
 NORTHERN PORTION OF EAST END PARK
 2300 NORTH ALSTON AVENUE
 DURHAM, NORTH CAROLINA

DRAWN BY: KRC	DATE: AUGUST 2023
DRAFT CHECK: CBH	JOB NO: R4370.00
ENG. CHECK:	GIS NO: 03G-R4370.00-6A-East End
APPROVAL: CBH	FIG NO: 6A



Legend

- Screening Location (2023; □400 mg/kg)
- Screening Location (2023)
- ▲ Screening Location (2022)
- East End Park
- Parcel Boundaries
- Approximate Location of Fencing
- 40 XRF Value (2022; mg/kg)
- 40 XRF Value (2023; mg/kg)

NOTE:
 1) Locations denoted with an asterisk (*) indicate screening locations where the planned sample location had to be offset due to access issues.

- REFERENCES:
1. AERIAL IMAGERY AND PARCEL BOUNDARIES FROM NC ONEMAP.
 2. Legacy Pb contamination in the soils of three Durham city parks: Do secondary forest organic horizons effectively blanket Pb in city park soils contaminated by historic waste incineration? Enikoe Bihari, December 16, 2022
 3. MID-ATLANTIC FIELD NOTES



NC OneMap, NC Center for Geographic Information and Analysis, NC 911 Board

1 inch □ 70 feet



SCREENING LOCATION MAP
 DURHAM PARK LEAD ASSESSMENT
 SOUTHERN PORTION OF EAST END PARK
 2300 NORTH ALSTON AVENUE
 DURHAM, NORTH CAROLINA

DRAWN BY:	KRC	DATE:	AUGUST 2023
DRAFT CHECK:	CBH	JOB NO:	R4370.00
ENG. CHECK:		GIS NO:	03G-R4370.00-6B-East□End
APPROVAL:	CBH	FIG NO:	6B