

Legend	
● (Blue)	Screening Location (2023; 400 mg/kg)
● (Green)	Screening Location (2023)
▲ (Green)	Screening Location (2022)
40 (Red)	XRF Value (2022; mg/kg)
40 (Blue)	XRF Value (2023; mg/kg)

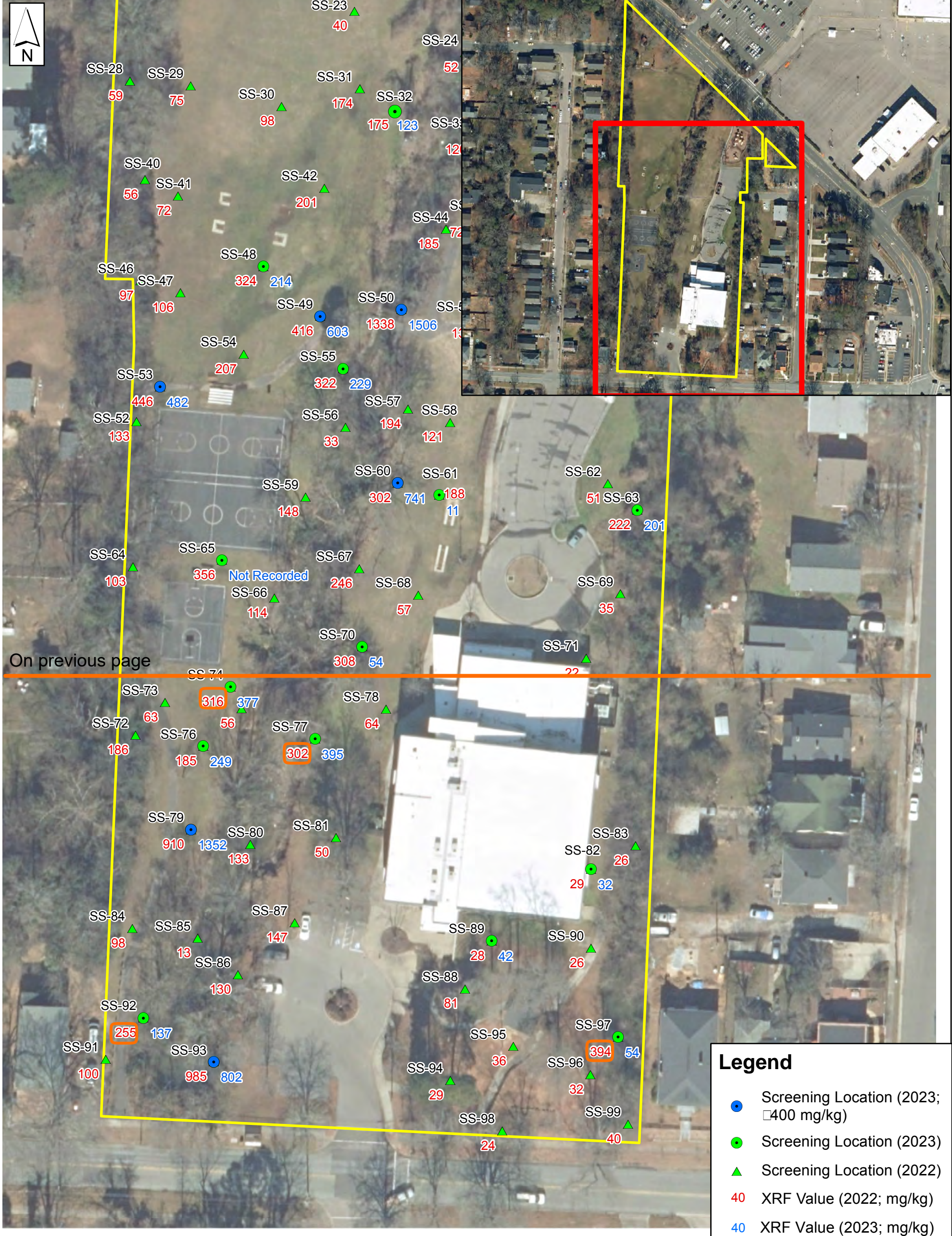
- REFERENCES:
1. AERIAL IMAGERY AND PARCEL BOUNDARIES FROM NC ONEMAP.
 2. Legacy Pb contamination in the soils of three Durham city parks: Do secondary forest organic horizons effectively blanket Pb in city park soils contaminated by historic waste incineration? Enikoe Bihari, December 16, 2022
 3. MID-ATLANTIC FIELD NOTES.

1 inch = 60 feet



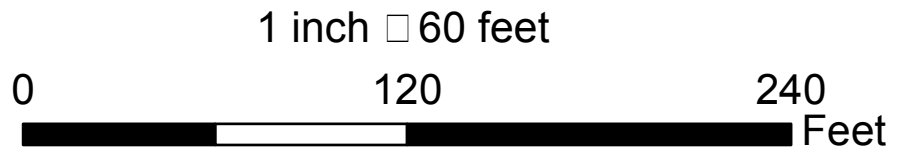
**SCREENING LOCATION MAP
 DURHAM PARK LEAD ASSESSMENT
 NORTHERN PORTION OF WALLTOWN PARK
 1308 WEST CLUB BOULEVARD
 DURHAM, NORTH CAROLINA**

DRAWN BY:	KRC	DATE:	AUGUST 2023
DRAFT CHECK:	CBH	JOB NO:	R4370.00
ENG. CHECK:		GIS NO:	03G-R4370.00-4A-Walltown
APPROVAL:	CBH	FIG NO:	4A



Legend	
●	Screening Location (2023; \square 400 mg/kg)
●	Screening Location (2023)
▲	Screening Location (2022)
40	XRF Value (2022; mg/kg)
40	XRF Value (2023; mg/kg)

- REFERENCES:
1. AERIAL IMAGERY AND PARCEL BOUNDARIES FROM NC ONEMAP.
 2. Legacy Pb contamination in the soils of three Durham city parks: Do secondary forest organic horizons effectively blanket Pb in city park soils contaminated by historic waste incineration? Enikoe Bihari, December 16, 2022
 3. MID-ATLANTIC FIELD NOTES.



SCREENING LOCATION MAP
DURHAM PARK LEAD ASSESSMENT
SOUTHERN PORTION OF WALLTOWN PARK
1308 WEST CLUB BOULEVARD
DURHAM, NORTH CAROLINA

DRAWN BY:	KRC	DATE:	AUGUST 2023
DRAFT CHECK:	CBH	JOB NO:	R4370.00
ENG. CHECK:		GIS NO:	03G-R4370.00-4B-Walltown
APPROVAL:	CBH	FIG NO:	4B